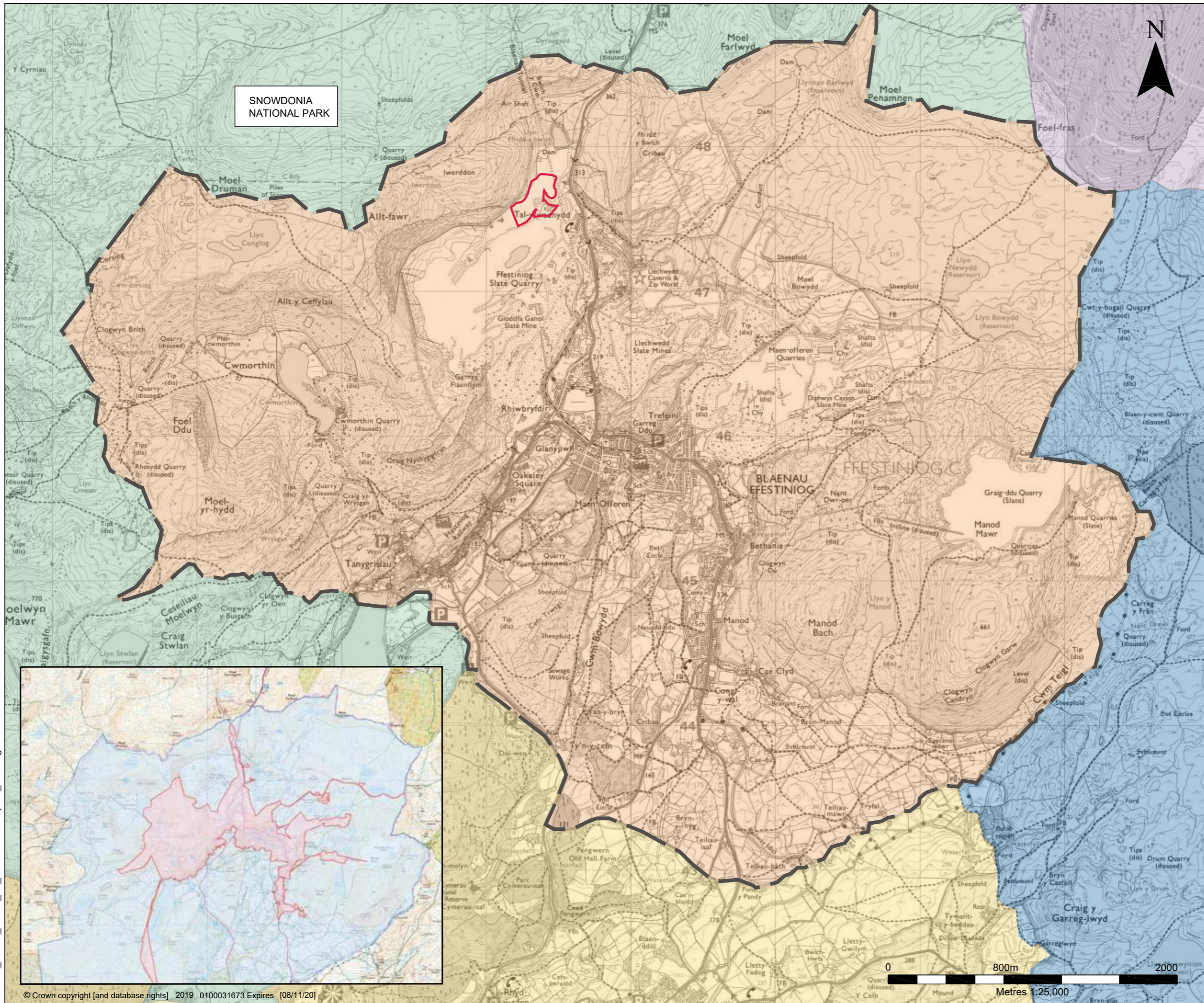


191108_06559_00027_29_character area plan_HD.dwg





SNOWDONIA NATIONAL PARK





Tal-y-hydd

BLAENAU FFESTINIOG


LEGEND

-  SITE BOUNDARY
-  SNOWDONIA NATIONAL PARK BOUNDARY



LANDSCAPES AND SEASCAPES OF SNOWDONIA JULY 2014:

-  5. Y MOELWYNION
-  6. COEDWIG GWYDYR
-  8. DYFFRYN Y DDWYRYD
-  9. Y MIGNEINT

GWYNEDD LANDSCAPE STRATEGY UPDATE 2012:

-  11. BLAENAU FFESTINIOG

THE SLATE LANDSCAPE OF NORTHWEST WALES:

-  PROPOSED WORLD HERITAGE SITE
-  PROPOSED BUFFER ZONE

NOTE: WORLD HERITAGE SITE SHOWN IN INSERT (BOTTOM LEFT)



2ND FLOOR
HERMES HOUSE
HOLSWORTH PARK
OXON BUSINESS PARK
SHREWSBURY, SY3 5HJ
T: 01743 239250
www.slrconsulting.com

**FFESTINIOG
MINERALS PLANT
ROPOSED DEVELOPMENT
LANDSCAPE RECEPTORS**

FQ - 5 / 1

Scale 1:25,000 @ A3 Date NOVEMBER 2019